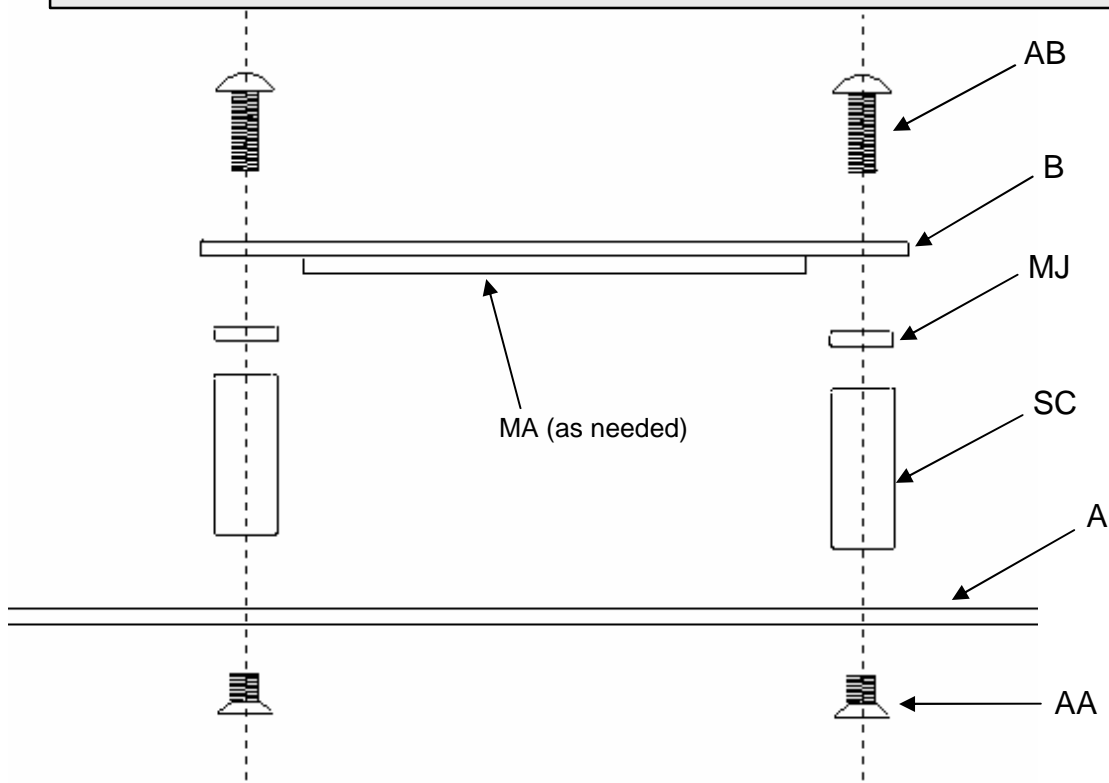
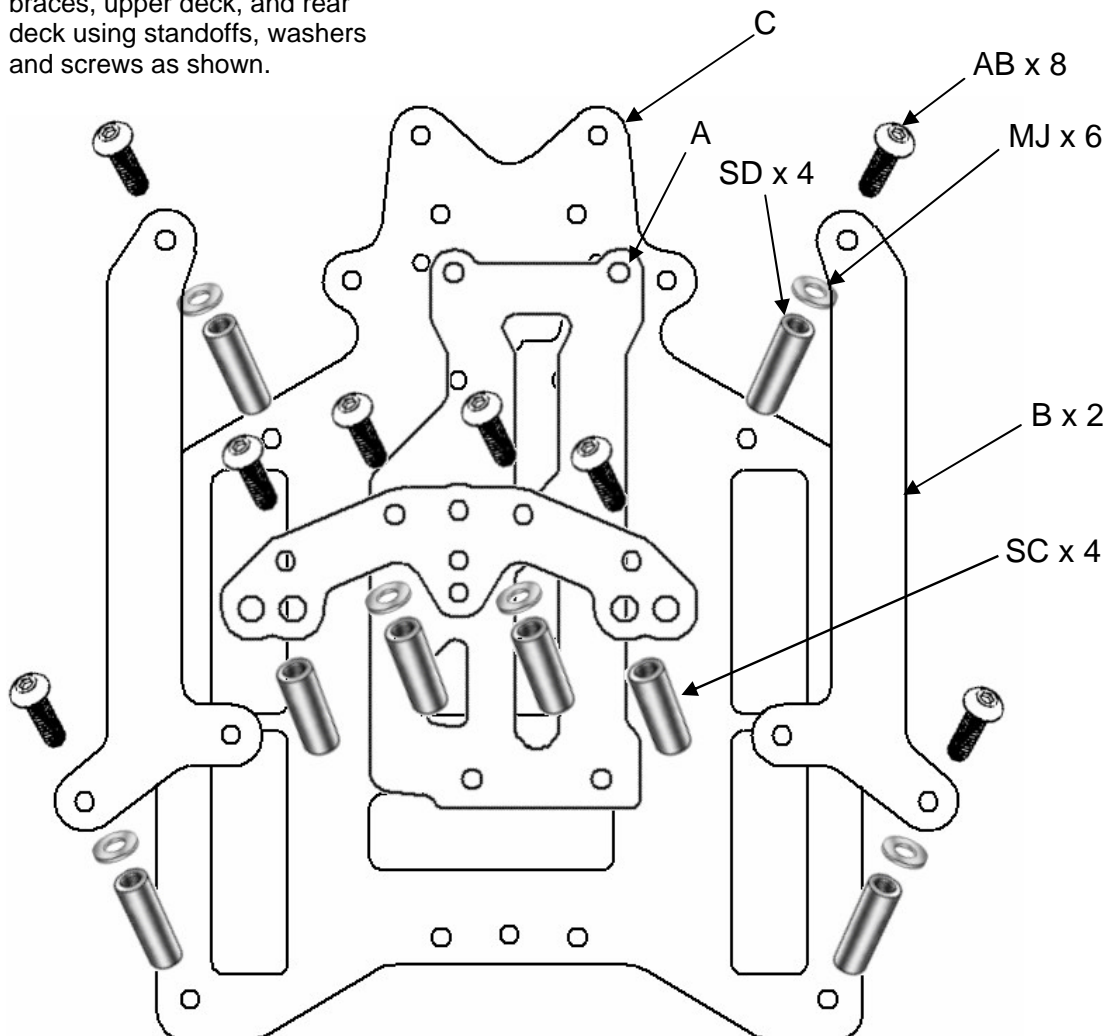


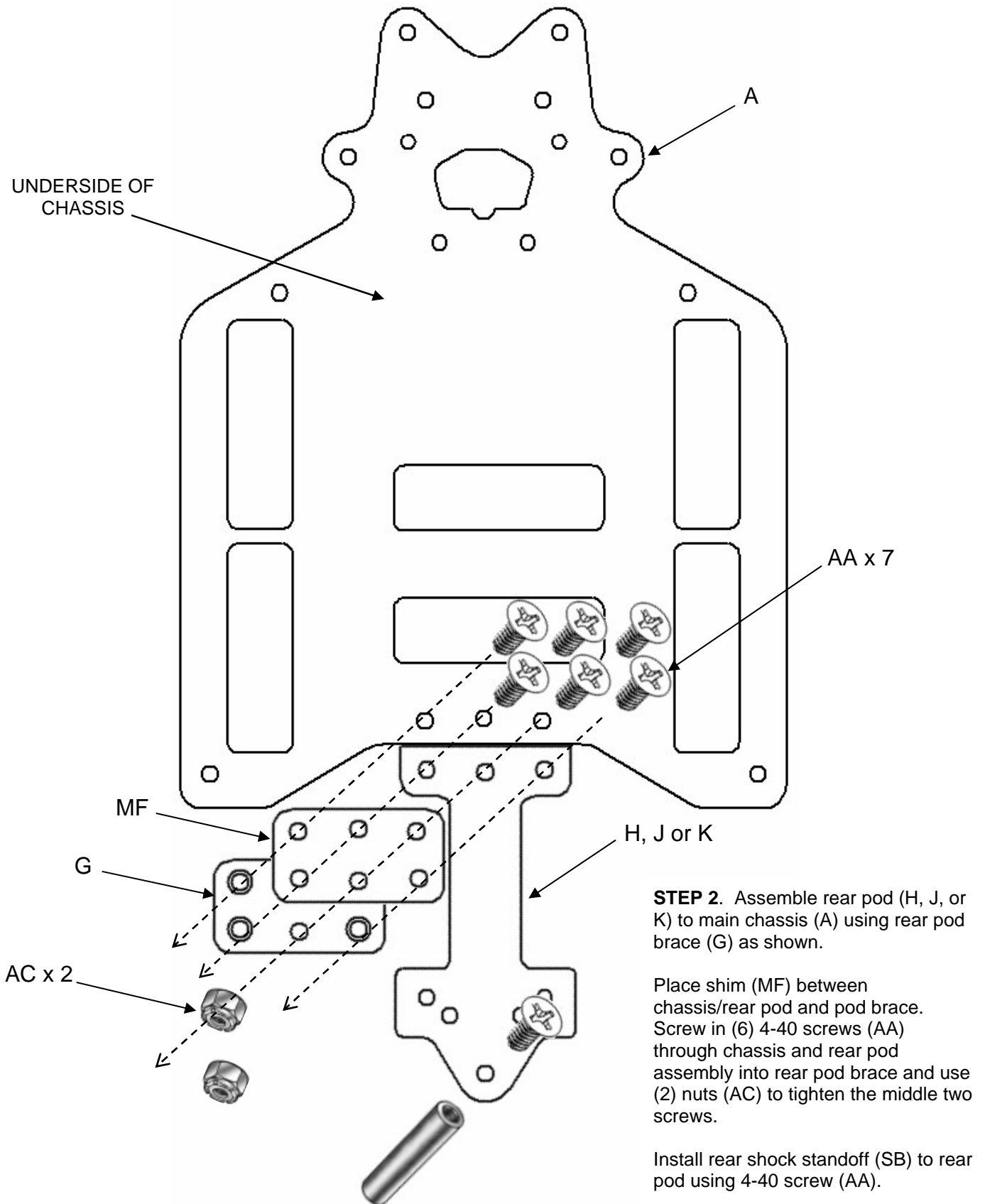
MAIN ASSEMBLY OF x3 SERIES GEN2 540s CHASSIS



STEP 1. Assemble battery braces, upper deck, and rear deck using standoffs, washers and screws as shown.



REAR POD AND POD BRACE ASSEMBLY



STEP 2. Assemble rear pod (H, J, or K) to main chassis (A) using rear pod brace (G) as shown.

Place shim (MF) between chassis/rear pod and pod brace. Screw in (6) 4-40 screws (AA) through chassis and rear pod assembly into rear pod brace and use (2) nuts (AC) to tighten the middle two screws.

Install rear shock standoff (SB) to rear pod using 4-40 screw (AA).

COMPLETED CHASSIS TOP VIEW

